

Points and Pots

By Lynn Harris

A tide of hobby divers flowed into the Underwater Archaeology Division at SCIAA in Columbia heavily loaded with their prehistoric collections on March 26.

This was an opportunity for licensed divers with some of the

biggest or most unique collections of projectile points and complete pots to meet with our Native American artifact specialists—Al Goodyear, Tommy Charles, and Chester DePratter. Photography aficionado, Daryl Miller, meticulously adjusted his lighting and backdrops to create a permanent and professional record of these finds for SCIAA. Divers who participated came from all around the state and recovered their collections from several different rivers and creeks. For example Darryl Boyd and Steve Arnold were from North Augusta, Stephen Taylor, Doug Boehme, and George Pledger from Charleston, Carl Woodward from Georgetown, Julius Duke from Florence, and Alec Blalock from Camden.

Throughout the day, divers and archaeologists enthusiastically compared and discussed Yadkin, Palmer, Morrow Mountain, Taylor, Kirk, and Bascom



Figure 1: George Pledger (l) and Dough Boehme (r), both from Charleston, brought their underwater artifact collections to SCIAA, which were identified by Tommy Charles, Lynn Harris, and Al Goodyear (SCIAA photo).



Figure 2: Doug Boehme (r) discusses his collection with Tommy Charles (SCIAA photo).



Figure 3: Projectile points found by Darryl Boyd from North Augusta, SC (SCIAA photo).

points. A complete Mississippian pot revealed how intact submerged artifacts found on the surface of a riverbed can be when divers find them. Amongst the points and pots was evidence of prehistoric activity often overlooked by divers such as cores, flakes, preforms, and the other debris associated with the tool making process.

Thank you all for bringing your collections to SCIAA.

We hope to repeat this workshop annually and include a photographic spread of the finds.



Figure 4: Prehistoric pot found by Alec Blalock from Camden (SCIAA photo).

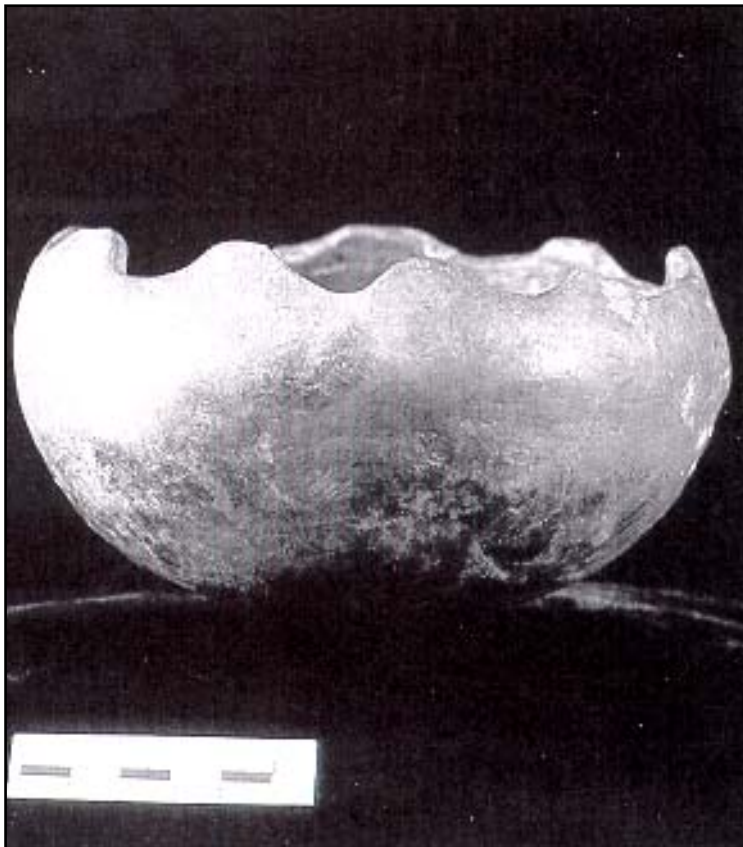


Figure 5: Burnished scalloped edge pot found by Steve Arnold from North Augusta, SC (SCIAA photo).



Figure 6: Early Archaic side-notched point found by Dough Boehme (SCIAA photo).



Figure 7: Steve Arnold and Alec Blalock standing near the artifact collections they brought for identification and recording (SCIAA photo).