

SOUTH CAROLINA

GEOGRAPHIC ALLIANCE

Link

Coordinator's Corner

Spring 2012

SCGA
center of excellence for geographic education

Twice each year you receive this newsletter. If you are a careful reader you know that the South Carolina Geographic Alliance offers many opportunities for teachers to improve their instruction in geography across the curriculum. In the past year we conducted 57 workshops at schools, school districts, and universities for nearly 2,000 educators. But did you know that the Alliance also works directly with students?

In this past year the Alliance:

- hosted more than 2,100 students in National Geographic's Giant Map program.
- provided judges, moderators, and scorers for the hundreds of students participating in the state-level National Geographic Bee
- led GPS field experiences for the Boys and Girls Clubs, Girl Scouts, Calvert Academy, and St. Peter's Catholic School
- participated in the Midlands Education and Business Alliance's career fair
- provided grant funding to Dutch Fork High and Lemira Elementary for GPS receivers, maps, and trade books (*see page 3 for information on these grant opportunities*)

I hope you see the diversity in that list. The South Carolina Geographic Alliance is here to help students and teachers in public, private, and charter schools, those that are home-schooled, and we also work with after-school and extra-curricular groups.

Your state Geographic Alliance is one of the best education programs of its type in the United States. Are you taking advantage of this resource?



**The Natural Landscape of
Somewhere in the World**

It's time to play "Where's Waldo?" This photo was taken on the way to El Morado. Can you name the host country? If you can, you may win a Geographic Alliance T-Shirt. Submit your answer along with your name and mailing address to mitchell@sc.edu. One winner will be randomly selected from all correct answers received by February 1. Good Luck! Use this link to see a larger image:

www.cas.sc.edu/cege/somewhere.pdf

Inside this Issue

- ▶ Workshop Information 2
- ▶ SC Religion Poster 2
- ▶ TCs on the Go! 3
- ▶ Grant Opportunities 3
- ▶ Earthquake Workshops 3
- ▶ Partner News 4
- ▶ Geofest Registration 5
- ▶ APHG Workshop 6
- ▶ Summer Institute 7
- ▶ Calendar 8

SCGA In-Service and Pre-Service Workshops

The South Carolina Geographic Alliance offers workshops and in-service training for schools and school districts across the state.

A sample of our workshop topics follows:

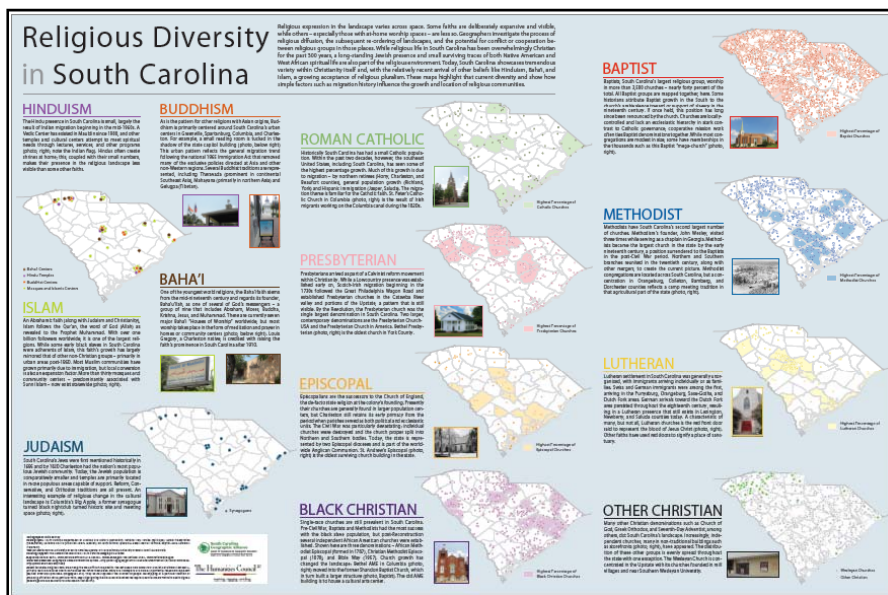
- Geography Across the Curriculum
- Geography and the Social Studies Standards
- Integrating Geography, Science and Math
- South Carolina Interactive Geography
- Geography Lessons for Elementary Teachers
- *South Carolina: An Atlas**
- SC MAPS*

The Alliance also offers pre-service workshops for South Carolina colleges and universities. This service is provided at no cost to colleges and universities and is an excellent way to introduce pre-service teachers to a professional organization that can assist them as they begin their teaching career.

SCGA workshops can be scheduled for in-class, after-school, half day, or full day. To schedule, please call the SCGA office at 803-777-4973 or toll free at 1-888-895-2023. *charges may apply for materials.

South Carolina Religious Diversity Poster

Religious expression in the landscape varies across space. Some faiths are deliberately expressive and visible, while others, especially those in more wooded spaces, are less so. Geographers investigate the processes of religious diffusion, the subsequent use of landscapes, and the potential for conflict or cooperation between religious groups in the places where religious life in South Carolina has been or is being developed. Over the past 100 years, a long-standing Jewish presence and small surviving traces of South Native American and their diffuse spiritual life and impact of the religious environment today. South Carolina, however, has a traditional variety of Christianities and, with the relatively recent arrival of other faiths like Hinduism, Islam, and Buddhism, representing a convergence of religious diversity. These maps highlight that current diversity and show how multiple factors such as migration history influence the growth and location of religious communities.



The Humanities Council^{SC}

inspiring. engaging. enriching.

A list of other Alliance-created posters for classroom use is available here:
www.cas.sc.edu/cege/resources/

SOUTH CAROLINA *Link*

SCGA TCs on the Go!

Congratulations to each of our Teacher Consultants (TCs) listed below:

- Ryan Billings (ASGI 2006) is working on his teaching degree at Otterbein University in Ohio.
- William Estes (ASGI 2010) is teaching at White Knoll High School in Lexington, South Carolina and coaching football.
- Dean Hunt (ASGI 2009) continues lecturing, including an upcoming talk at Richland County Public Library on “Lexington County’s Lost Revolutionary War Battlefields.”
- Teresa Knox (ASGI 2010) is teaching at Grove Elementary in Greenville, South Carolina and will complete her Masters in Elementary Education at the University of South Carolina Upstate this May.
- Mark Musselman (ASGI 1995) recently had his GPS work at Ashley Ridge High School featured in *The Summerville Journal Scene*.
- Karl Neumann (ASGI 2011) is creating a Google Earth-based curriculum for a Western Civilization course he teaches at Dana Hall School (Massachusetts).
- Chuck Stjern (ASGI 1997) and Dan Stone (ASGI 2005) have been busy canoeing South Carolina’s rivers with math colleague Chuck Kuhnell (see *photo below*).
- Susan Wise (ASGI 1992), formerly Resident Teacher Consultant with the Alliance, is now teaching 8th grade at Chapin Middle in Chapin, South Carolina.



Kuhnell, Stone, and Stjern prepare to paddle South Carolina’s Black River (with an atlas in hand!).

Kovacik Geography Grants

Kovacik Geography Grants are named in honor of Dr. Charles F. Kovacik, the second coordinator of the South Carolina Geographic Alliance. Dr. Kovacik was instrumental in the growth of geography education in South Carolina.

South Carolina teachers are among our best partners to increase and promote K-12 geographic literacy. These grants are meant to support their geography instruction when traditional funding options are unavailable. Proposed work should directly focus on improving instruction through the development of new curriculum materials or the acquisition of essential classroom materials and equipment. The Alliance will award up to three grants of \$1,000 each in 2012. Application materials are available under the ‘Resources’ section of the Alliance website and are due by April 1, 2012. Visit www.cas.sc.edu/cege for more information.

Earthquakes!

The Alliance, via grant funding from FEMA and the SC Emergency Management Division, will conduct two workshops in 2012 titled “Earthquakes in South Carolina: Bridging the Social and Science Divide for K-12 Educators.” Look for dates and workshop locations when they are announced later this Spring.



Damage resulting from the 1886 Charleston earthquake. More than 60 persons were killed.

SOUTH CAROLINA *Link*

Alliance Partnership News



The Alliance will be working on a pilot study this spring with the Education Oversight Committee to adapt a GeoLiteracy program to the South Carolina academic standards. This program has been shown to improve reading skills and promotes teaching geography. More information will be available later this year. Learn more about the EOC at www.eoc.sc.gov



The National Council for Geographic Education conducts research, produces curricular resources, and promotes better geographic teaching and learning. **The next annual meeting will be held in San Marcos, Texas, October 4-7, 2012.** The South Carolina Geographic Alliance encourages its members to attend. Visit NCGE at www.ncge.org



The Climate Literacy Partnership in the Southeast project aims to gather fact-based, non-advocacy information which will lead to a better understanding of people's views and ultimately to the creation of a strategic plan for educating the public about climate issues. The South Carolina Geographic Alliance is helping CLiPSE identify key organizations involved with climate issues in South Carolina. For more information visit: www.clipse-project.org



The Midlands Education and Business Alliance works to connect students, parents, educators and employers to education and career opportunities. The South Carolina Geographic Alliance is working with MEBA to identify geography's role in 16 career clusters that are key to enhancing economic development. More information about the career clusters can be found in MEBA's "Be A Part Of" brochures: www.mebasc.com/resources/be-a-part-of-brochures/



IT-oLogy is a non-profit collaboration of businesses, academic institutions and organizations dedicated to growing the Information Technology talent pipeline and advancing the IT profession. IT-oLogy has three main initiatives: Promote IT (K-12), Teach IT (Higher Education) and Grow IT (Professionals and Businesses). They want to work with you and your students! More information about their work is available at: www.it-ology.org

Geofest 43 REGISTRATION FORM

Saturday, February 18, 2012 9:30 AM - 3:30 PM
University of South Carolina, Callcott Social Science Building, Columbia

Geofest will include content lectures presented by USC geography faculty and standards-based teaching strategies for the elementary, middle, and high school classroom. All participants will receive SCGA materials and lunch with their registration. Registration must be received by **Friday, February 10, 2012**, in order to receive an email confirmation, materials, and lunch. Late and walk-up registration will be considered pending available space. For more information, call 1-888-895-2023. A map to the event is available online at www.cas.sc.edu/cege/alliancedirections.pdf. The Geofest program will be posted online at a later date.

TO REGISTER

Complete this form and mail with payment to:
SCGA, Department of Geography, University of South Carolina, Columbia, SC 29208.
Make checks payable to the University of South Carolina.

Last Name

First Name

Street Address

City

State

Zip

Phone

Email

School Name

\$ _____ \$15.00 Regular Registration

\$ _____ \$10.00 Pre-Service (student) Registration

\$ _____ \$15.00 SCGA T-shirt (circle size): M L XL

\$ _____ Total Enclosed



Center of Excellence for Geographic Education
South Carolina Geographic Alliance



AP[®]* HG WORKSHOP REGISTRATION FORM

Saturday, January 21, 2012 9:00 AM – 4:00 PM
University of South Carolina, Callcott Building
Columbia, South Carolina

Workshop Objectives

1. introduce new thinking and research about teaching geography
2. receive content instruction on AP[®] HG topics
3. introduce strategies to maximize success on the AP[®] HG exam
4. provide a forum for AP[®] HG teachers to share successes/concerns with other AP[®] HG teachers

Who is eligible to attend?

All current and prospective AP[®] Human Geography teachers in South Carolina

Participants will receive:

1. attendance verification
2. lunch is provided for all participants
3. teaching materials

Fee

Submit a **\$10** check payable to the University of South Carolina. This nominal fee partially covers materials and lunch for each participant.

For more information, call 803-777-4973 or toll free 1-888-895-2023. A map to the event is available online at www.cas.sc.edu/cege/alliencedirections.pdf

*AP, Advanced Placement and Advanced Placement Program are registered trademarks of the College Board, which was not involved in the production of and does not endorse this forum.

TO REGISTER

This form must be submitted for all registrants. Fax this form to 803-777-4972 or mail to: SCGA, Department of Geography, University of South Carolina, Columbia, SC 29208.

Registration must be received by **Friday, January 13, 2012.**

Make checks payable to the University of South Carolina in the amount of \$10.00.

Last Name

First Name

Street Address

City, State, Zip

Phone

Email

School Name

SOUTH CAROLINA

GEOGRAPHIC ALLIANCE

Alliance Summer Geography Institute

June 10-22, 2012
University of South Carolina - Columbia

The SCGA will sponsor the Alliance Summer Geography Institute at the University of South Carolina, Columbia, South Carolina on **June 10-22, 2012**. The Institute is an intensive, two-week training program intended to increase teachers' knowledge of geography, introduce teachers to new teaching techniques and materials, and help them develop skills in presenting in-service workshops to other teachers. All K-12 teachers, and those involved with K-12 education outreach, are invited to apply.

Participants receive:

- ▶ 3 graduate credits
- ▶ Teaching resources valued at over \$500
- ▶ Lodging at USC (if needed)
- ▶ Most meals
- ▶ Opportunity to participate in national workshops upon graduation

Participant costs:

- ▶ \$150 Institute tuition
- ▶ \$150 Housing Reservation fee*
- ▶ USC student fee, if applicable*
- ▶ Some meals
- ▶ *See online application for details



To download an application form:
www.cas.sc.edu/cege

Spring 2012 Calendar

January

- 19-21** South Carolina Early Childhood Association – Myrtle Beach
- 21** AP Human Geography Workshop – Columbia

February

- 3-4** South Carolina Council for African American Studies – Columbia
- 17** Berkeley County SD – Goose Creek
- 18** Geofest 43 – Columbia
- 24-28** Association of American Geographers – New York City, NY

March

- 2-4** South Carolina Middle School Association – Myrtle Beach
- 30** National Geographic Bee – State Level – Columbia

April

- 3-5** National Geographic Giant Map – St. Anne's Catholic School – Rock Hill
- 9-11** National Geographic Giant Map – LBC Middle – Warrentonville
- 12-13** National Geographic Giant Map – Pinewood Prep – Summerville
- 16-19** National Geographic Giant Map – Furman Middle – Sumter

May

- 22-24** National Geographic Bee – National Level – Washington DC

June

- 10-22** Alliance Summer Geography Institute

This is a small selection of events involving the South Carolina Geographic Alliance this spring. Don't see your school or district? Contact us via the information below to arrange an event.

SCGA Contact Info

1-888-895-2023
1-803-777-4973
1-803-777-4972 (fax)
www.cas.sc.edu/cege



Editorial Staff

Dr. Jerry T. Mitchell, SCGA Coordinator
Monti Caughman, SCGA Resident Teacher Consultant
Larianne Collins, Graduate Assistant

The South Carolina Geographic Alliance is supported by the State of South Carolina through Education Improvement Act funds and by the National Geographic Education Foundation.